



**Customer:** Kuribl  
**Address:** 12527 Central Ave. NE, Suite 172  
Minneapolis, MN 55434  
**Sample ID:** Kuribl CBD Pet Treats #3E07  
**Matrix:** Edible  
**Labnumber:** 23E0089-01

Total mass or volume per unit (g or mL): 4.0327

## Cannabinoid Profile

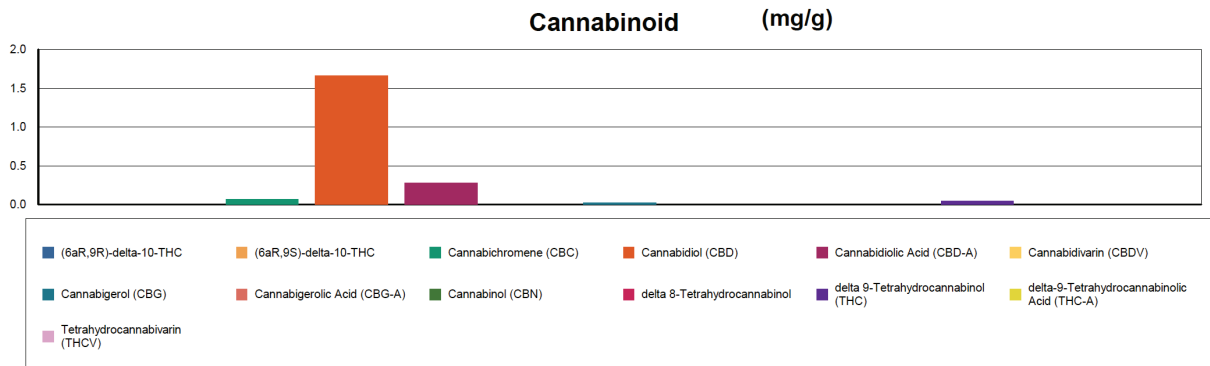
**Test Conditions:** 21°C  
**Extraction Technician:** SH  
**Analytical Chemist:** SH

Extraction Date(s)	Analysis Date(s)
5/16/2023	5/17/2023

Cannabinoids (HPLC)		Results		
	LOD (mg/g)	%	mg/g	mg/Treat
Cannabidivarin (CBDV)	<0.020			
Cannabidiolic Acid (CBD-A)		0.03	0.283	1.14
Cannabigerolic Acid (CBG-A)	<0.020			
Cannabigerol (CBG)		0.002	0.022	0.087
Cannabidiol (CBD)		0.17	1.66	6.71
Tetrahydrocannabivarin (THCV)	<0.020			
Cannabinol (CBN)	<0.020			
Cannabichromene (CBC)		0.007	0.068	0.274
delta 9-Tetrahydrocannabinol (THC)		0.005	0.046	0.183
delta-9-Tetrahydrocannabinolic Acid (THC-A)	<0.030			
delta 8-Tetrahydrocannabinol	<0.030			
(6aR,9S)-delta-10-THC	<0.030			
(6aR,9R)-delta-10-THC	<0.030			
<b>Cannabinoids Total</b>		<b>%</b>	<b>mg/g</b>	
Max Active THC (delta-9-tetrahydrocannabinol)		0.00	0.05	
Max Active CBD		0.19	1.91	
Total Cannabinoids		0.21	2.08	

Following USDA guidelines on uncertainty, Altitude Consulting's uncertainty is calculated to be +/- 5% for all cannabinoids using a coverage factor of 2 (95% confidence interval). Measurement uncertainty has not been factored into reported values.

Blank results indicate the compound was below the limit of detection.



**Gary Brook - Laboratory Director - 5/17/2023**

Reporting Limits will vary based on sample extraction weight used for the analysis.

The results of this report are based solely on the sample submitted and cannot be reproduced. Decision Rule: Measurement uncertainty is not accounted for in the reported values.

Results are based solely on calculated numbers. Altitude Consulting makes no Statements of conformity. **Pesticide, metal, and microbial analyses are subcontracted to ISO 17025 laboratories.**